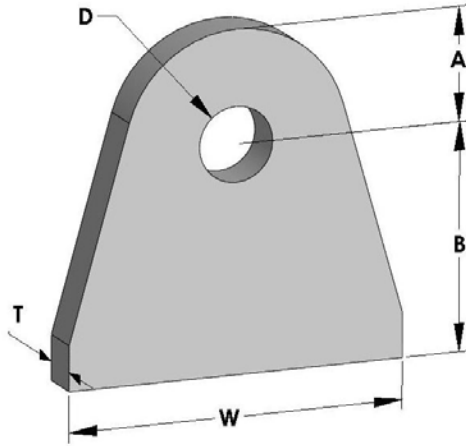


When ordering, please quote the Part No. for required size and material.



Material	Max Operating Temperature
Carbon Steel	100°C
Boiler Plate	470°C
Alloy Steel	570°C
Stainless Steel	650°C
Surface Finish	
Mill Finish	

General Notes

- Lug to be welded to pipe must be of the same material grade as parent pipe.
- Please refer to page 3 for material standards and specifications.

To Suit Drop Rod Size	Description	(A)	(B)	Diameter (D)	WxT	Max Load at 100°C	Item Weight	Material Types			
								Carbon Steel	Boiler Plate	Stainless Steel	Chrome Moly
								Part No.	Part No.	Part No.	Part No.
M12	M12 Pipe Welding Lug	23	48	14	70x10	612	0.28	216001	216013	216025	216037
M16	M16 Pipe Welding Lug	28	58	18	85x12	1,020	0.50	216002	216014	216026	216038
M20	M20 Pipe Welding Lug	35	70	22	105x12	1,560	0.75	216003	216015	216027	216039
M24	M24 Pipe Welding Lug	40	80	26	120x16	2,700	1.30	216004	216016	216028	216040
M30	M30 Pipe Welding Lug	50	100	32	150x16	3,390	2.02	216005	216017	216029	216041
M36	M36 Pipe Welding Lug	58	118	38	175x25	6,330	4.35	216006	216018	216030	216042
M42	M42 Pipe Welding Lug	68	138	44	205x25	8,544	5.94	216007	216019	216031	216043
M48	M48 Pipe Welding Lug	75	150	50	225x32	11,262	9.14	216008	216020	216032	216044
M56	M56 Pipe Welding Lug	88	178	58	265x32	14,802	12.67	216009	216021	216033	216045
M64	M64 Pipe Welding Lug	100	200	66	300x36	18,228	18.19	216010	216022	216034	216046
M72	M72 Pipe Welding Lug	113	228	77	340x40	23,640	26.04	216011	216023	216035	216047
M80	M80 Pipe Welding Lug	125	250	82	365x40	28,560	31.00	216012	216024	216036	216048